



NEW

ALUMINIUM LIGHTWEIGHT & SUPER STRONG

P150 PLATFORM STEPLADDERS

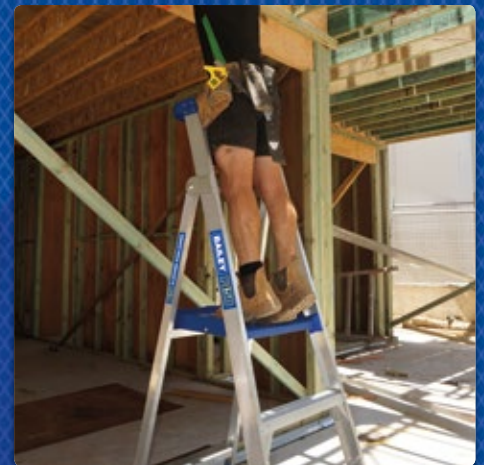
An unbelievably strong and lightweight platform stepladder that offers exceptional 'Value For Money'

- ▶ Load rating - 150kg Industrial, suitable for use on industrial work sites
- ▶ Clever handrail design with magnets to secure tools and fasteners
- ▶ Aluminium design - Strong, Stable and Safe
- ▶ Sizes - 3,4,5,6 (most popular sizes)
- ▶ Large stable platform size - 490 x 400mm
- ▶ Anti-slip boots increase stability
- ▶ Durable solid nylon block on stile to platform connection
- ▶ Overlocking internal pivot arms under the platform increase stability and resistance to 'ladder walk'
- ▶ Castors available as an accessory (FS13584)
- ▶ DropLok buckets available as accessory (FS23207)



INDUSTRIAL
HEAVY DUTY

150KG



MODEL NAME	REACH HEIGHT	LADDER SIZE	PRODUCT WEIGHT	PRODUCT NUMBER	EAN CODE
P150-3 AL	2.3m	0.9m	11kg	FS13580	9312097059191
P150-4 AL	3.2m	1.2m	12.5kg	FS13581	9312097059207
P150-5 AL	3.5m	1.5m	13.9kg	FS13582	9312097059214
P150-6 AL	3.8m	1.8m	15.8kg	FS13583	9312097059221
CASTOR KIT	—	—	3.5kg	FS13584	9312097059238
DROPLOK BUCKET	—	—	0.6kg	FS23207	9312097058996

*Assumes a 1.70m person with a vertical 0.30m reach